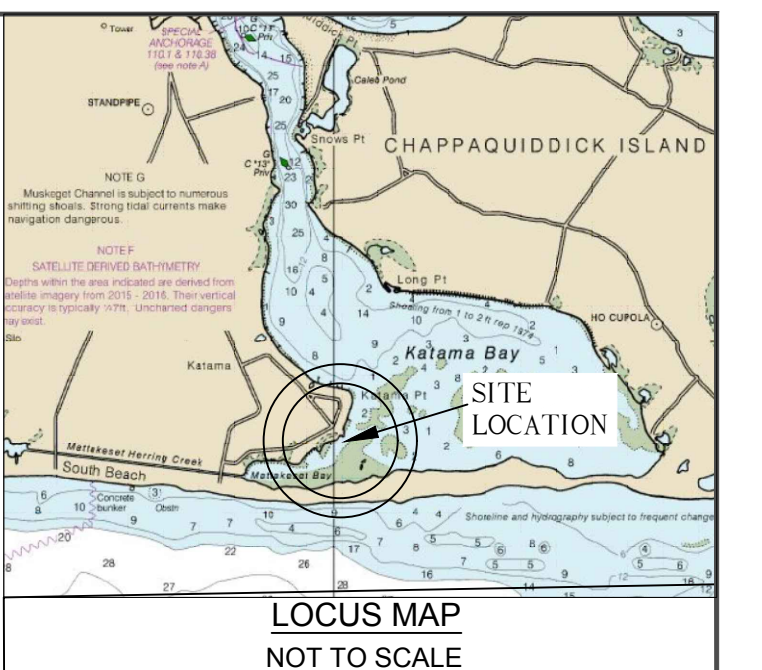


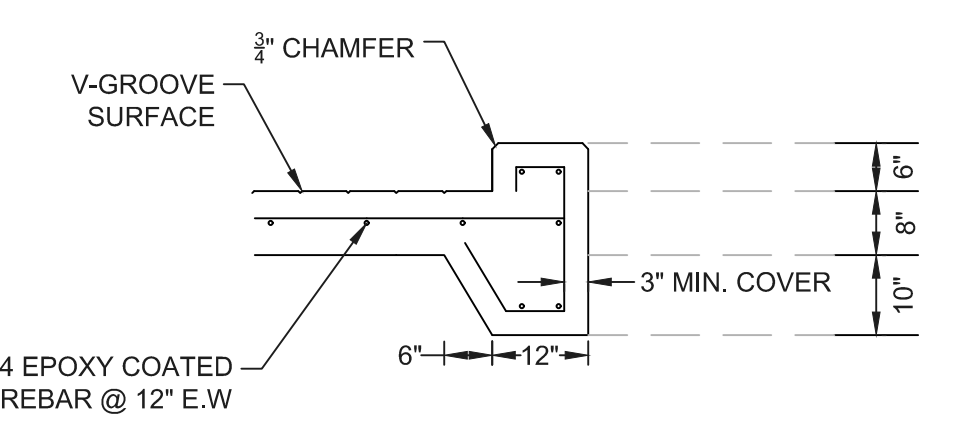
DATUM OFFSETS

MLW	NAVD88	FEMA FLOOD (VE)
13.57	12	FEMA FLOOD (VE)
2.78	1.21	AHTL (1/31/18)
2.14	0.57	MHW
1.57	0	NAVD88
0	-1.57	MLW
-0.22	-1.79	MLLW

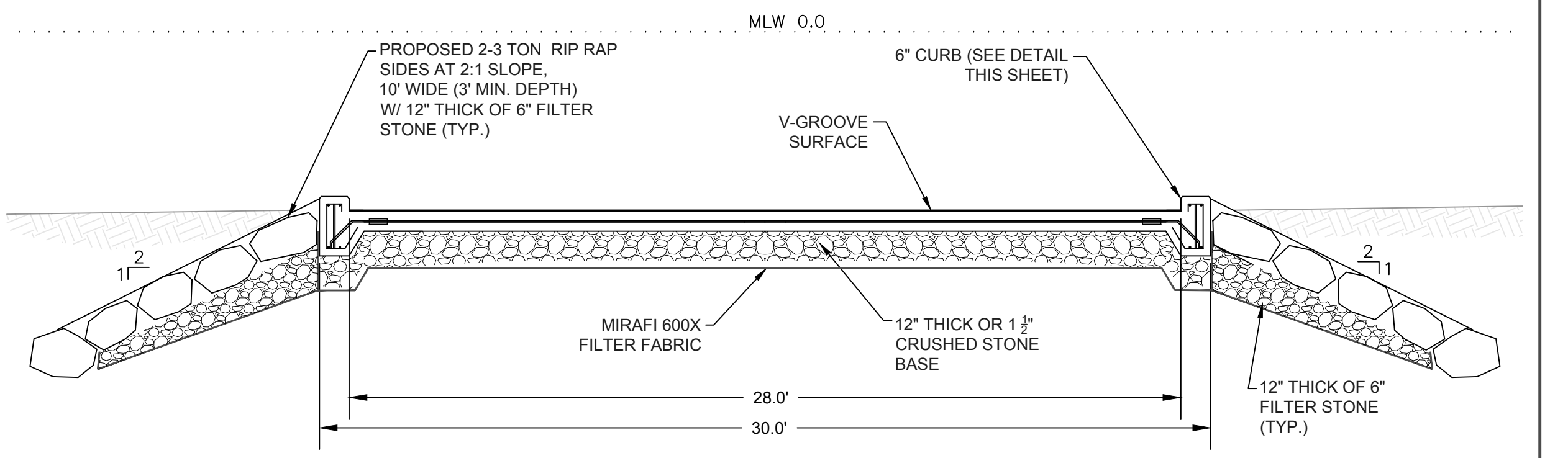
- SURVEY NOTES:**
- PROJECT NAME: HYDROGRAPHIC SURVEY
 - PROJECT NUMBER: 17211.100
 - PLOT SCALE: 1"=20'
 - SURVEY DATE: JUNE 20, 2017
 - SURVEYOR: M. COUNT, C.FLYNN
 - VEHICLE: CLE OLAF
 - VESSEL: ODOM CVM, 200 KHZ TRANSDUCER, TRIMBLE AG132
 - TRANS.FATH.: SUNNY, 75 DEGREES, WIND SE 5-10 KTS
 - WEATHER COND: MLW
 - PROJECT DATUM: NAD-83, MASS ISLAND
 - COORD. SYSTEM: 1' DATA SORT
 - DATA REDUCTION: 12. BENCHMARK: DH IN CONC. BOUND EL. +6.18' MLW



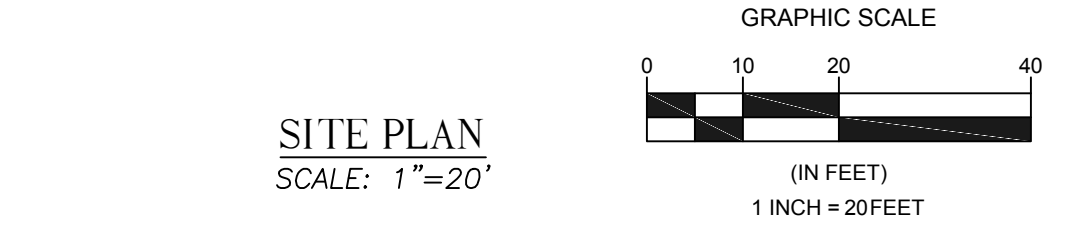
- NOTES:**
- RESULTS OF TOPOGRAPHIC SURVEY BY CLE ENGINEERING, INC. (CLE) ON 7-5-17.
 - RESULTS OF HYDROGRAPHIC SURVEY BY CLE ENGINEERING, INC. (CLE) ON 6-20-17.
 - EEL GRASS SURVEY PERFORMED BY CLE ENGINEERING, INC. (CLE) ON 6-21-17.
 - ELEVATIONS AND SOUNDINGS ARE IN FEET AND TENTHS, AND REFER TO THE MLW DATUM.
 - DATUM SHIFT SHOWN WAS CALCULATED USING VDATUM 3.5 AT THE PROJECT SITE.
 - COORDINATES ARE BASED ON NAD83 MASSACHUSETTS ISLAND STATE PLANE GRID SYSTEM.
 - PROJECT BENCHMARK IS DRILL HOLE IN CONCRETE BOUND ELEVATION +6.18' MLW AS PER SITE PLAN ENTITLED "PROPOSED ACCESS RAMP AND FACILITIES, KATAMA BAY, EDGARTOWN" BY DPW OF MA, DIVISION OF WATERWAYS DATED JANUARY 1968.
 - PROJECT SITE IS IN FEMA ZONE AE EL. +10' NAVD88 AND VE EL. +18 NAVD88 IN ACCORDANCE TO FEMA FIRM #25007C0226J, EFFECTIVE DATE JULY 16, 2016.
 - PROPERTY LINES SHOWN ARE APPROXIMATE AND TAKEN FROM 1968 SITE PLAN ENTITLED "PROPOSED ACCESS RAMP AND FACILITIES, KATAMA BAY, EDGARTOWN" BY DPW OF MA, DIVISION OF WATERWAYS DATED JANUARY 1968 AND EDGARTOWN GIS DATABASE.
 - BASED ON MASS GIS, THE PROPOSED BOAT RAMP AREA IS LOCATED WITHIN APPROVED SHELLFISHING AREA (QUAHOG, BAY SCALLOP, AND SOFT-SHELL CLAM).
 - THE INFORMATION DEPICTED ON THIS PLAN REPRESENTS THE RESULTS OF SURVEYS ON THE DATES SHOWN, AND CAN ONLY BE CONSIDERED AS INDICATING THE GENERAL CONDITIONS AT THAT TIME. INTERPOLATED INFORMATION FROM BETWEEN SOUNDING RUNS IS NOT GUARANTEED. SHOALS, OBSTRUCTIONS OR OTHER DIFFERING CONDITIONS MAY EXIST BETWEEN THESE RUNS. CONSULT WITH CLE ENGINEERING FOR MORE DETAILED INFORMATION.
 - POSSESSION AND USE OF THE MATERIAL CONTAINED ON THESE DRAWINGS IS GRANTED ONLY IN CONNECTION WITH ITS USE AS IT RELATES TO THE TITLED PROJECT, ANY OTHER USE, REPRODUCTION OR DISCLOSURE OF THE INFORMATION CONTAINED HEREON IS EXPRESSLY PROHIBITED WITHOUT THE WRITTEN CONSENT OF CLE ENGINEERING INC.
- © COPYRIGHT 2018, CLE ENGINEERING, INC.



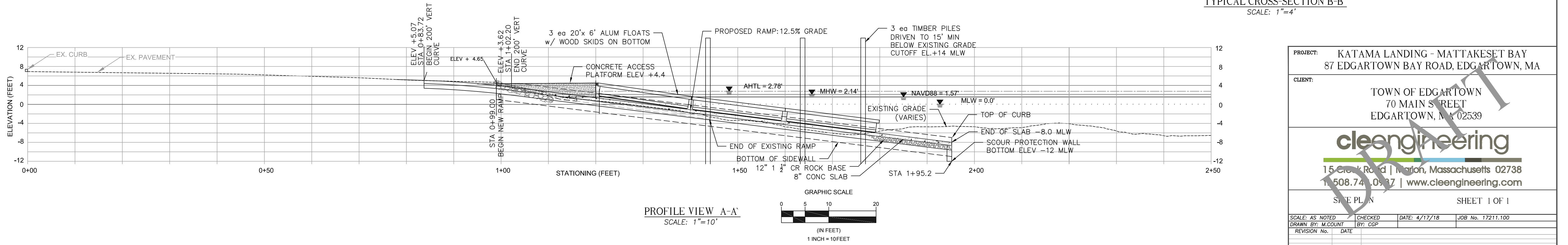
CONCRETE BOAT RAMP DETAIL (SIDES WHERE SHOWN)
SCALE: 1"=2'



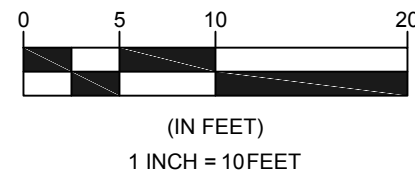
TYPICAL CROSS-SECTION B-B
SCALE: 1"=4'



SITE PLAN
SCALE: 1"=20'



PROFILE VIEW A-A
SCALE: 1"=10'



PROJECT: KATAMA LANDING - MATTAKESSET BAY
87 EDGARTOWN BAY ROAD, EDGARTOWN, MA

CLIENT: TOWN OF EDGARTOWN
70 MAIN STREET
EDGARTOWN, MA 02539

cleengineering
15 Cleary Road | Marion, Massachusetts 02738
508.740.0937 | www.cleengineering.com

SITE PLAN SHEET 1 OF 1

SCALE: AS NOTED	CHECKED	DATE: 4/17/18	JOB No. 17211.100
DRAWN BY: M.COUNT	BY: CGP		
REVISION No.	DATE		